



ADAM

FABRICATION

ELABORATIVE SYNERGETIC PROFICIENT

Introduction

ADAM Fabrication is offering a wide range of Welded and Non-Welded Metal Fabrication & Machining services by using Steel, Stainless Steel, etc. and also applying Coating or Finishing.

We are a contractor and making our fabrications by using our wide network of fabricators.

Corporate



2012

Founded in



3 Million €/Client

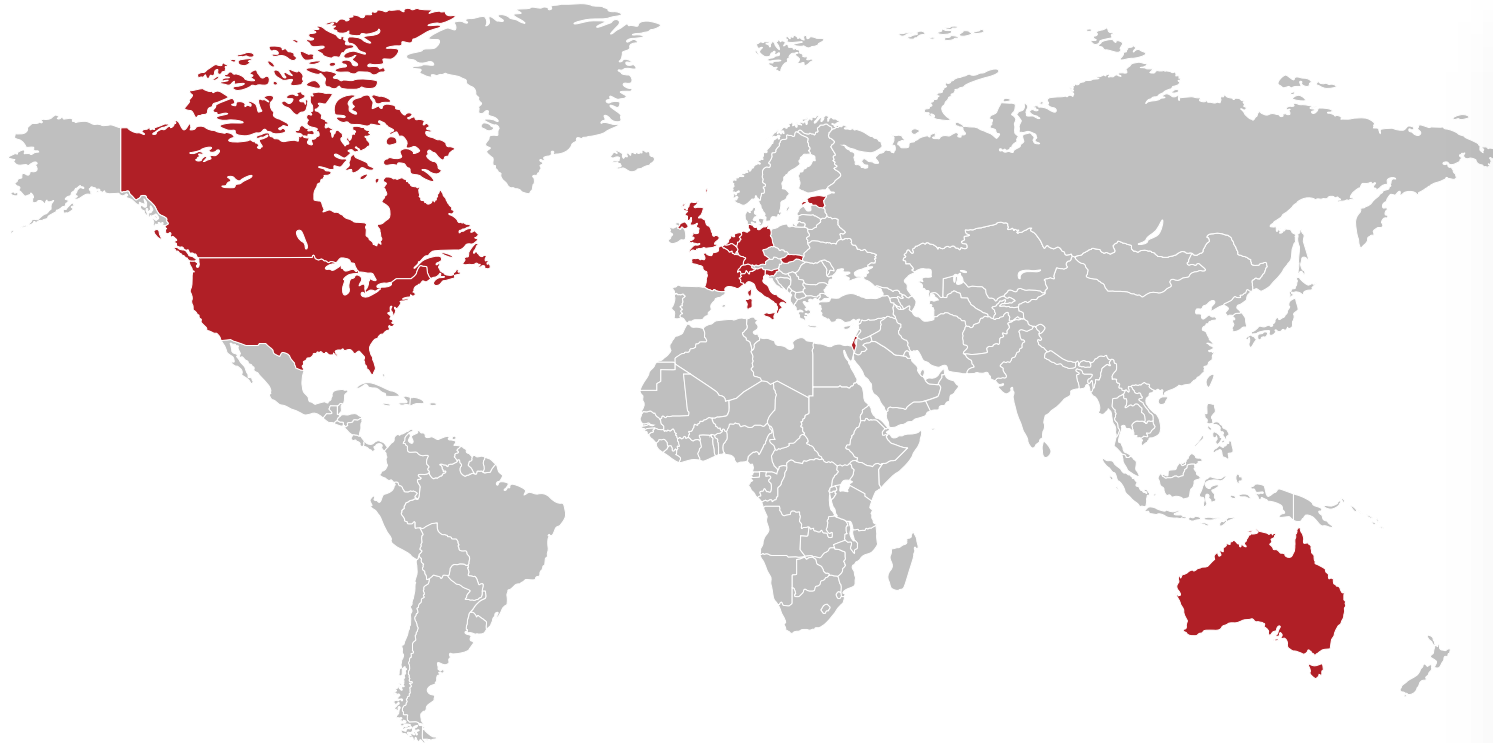
Annual Supply Limit First Year



Europe

93% of our Customers

Countries & Sectors



Germany, **England**, USA, **Italy**, Holland, **Belgium**, Switzerland, **Israel**, Australia, **Canada**, France, **Slovakia**, Slovenia, **Estonia**

- ✓ Trailers for different applications
- ✓ Live-fire training systems
- ✓ Access Control and Anti-Terror Security Systems
- ✓ Load securing and safety equipment
- ✓ Loading dock equipment & industrial doors & safety barriers
- ✓ Cooking Oil Filtration
- ✓ Radiators
- ✓ Various PVC mixers
- ✓ Polymer solutions
- ✓ Energy
- ✓ Construction
- ✓ Fountains and swimming pools
- ✓ Winter service vehicles and attachments

Certificates

ISO 9001:2015

Quality Management
Systems (DAKKS certified)



ISO 10002:2018

Customer
Satisfaction



ISO 45001:2018

Occupational Health and
Safety Management System



ISO 14001:2015

Environmental Management
Systems (DAKKS certified)



Advantages of Turkey



Endless Options



Part of Europe



Lower Costs



EU Standards

Advantages of ADAM



Limitless Capacity

Benefit from capacities of hundreds of fabricators
No orders are rejected due to lack of capacity



Limitless Capability

Many different types and sizes of Machinery & Plants
Dealing with one company for all of your needs



Quality Control

QC is made twice
Comprehensive and effective QC system
Daily visits



Delivery Time

Able to divide the job between different fabricators to achieve challenging delivery times
Assigned project engineers follow up speed of fabrication daily and take immediate actions

Machinery

Which we use the most for fabrications

542 Available

Brake Bending Machines



up to L: 12m t: 20mm

338 Available

Sheet Metal Cutting



up to W: 3m L: 12m t: 160mm

1.614 Available

MIG & TIG Welding



Manual, Robotic, Orbital

34 Available

Profile Cutting



up to Dia: 325mm L: 12m t: 25mm

Machinery

Which we use the most for fabrications

97 available

Punching Machines



up to W: 1,50m L: 3m t: 6mm

45 available

Profile & Sheet Metal Rolling Machines



t: 140mm W: 3.000mm
min. Dia: 350mm

441 available

Press Machines



up to 1.000 tons

29 available

Dishing Head



Various Types & Dimensions

1.002 available

Machining



up to 7 axis CNC

Coating

Electro galvanizing



Hot Dip Galvanizing



Wet Paint



Powder Coating



Cathaphoresis



Chrome Plating



Hard Chrome Plating



Thermal Spraying



Finishing

Blasting

Glass

Sand



Pickling



Passivation



Polishing



Satine

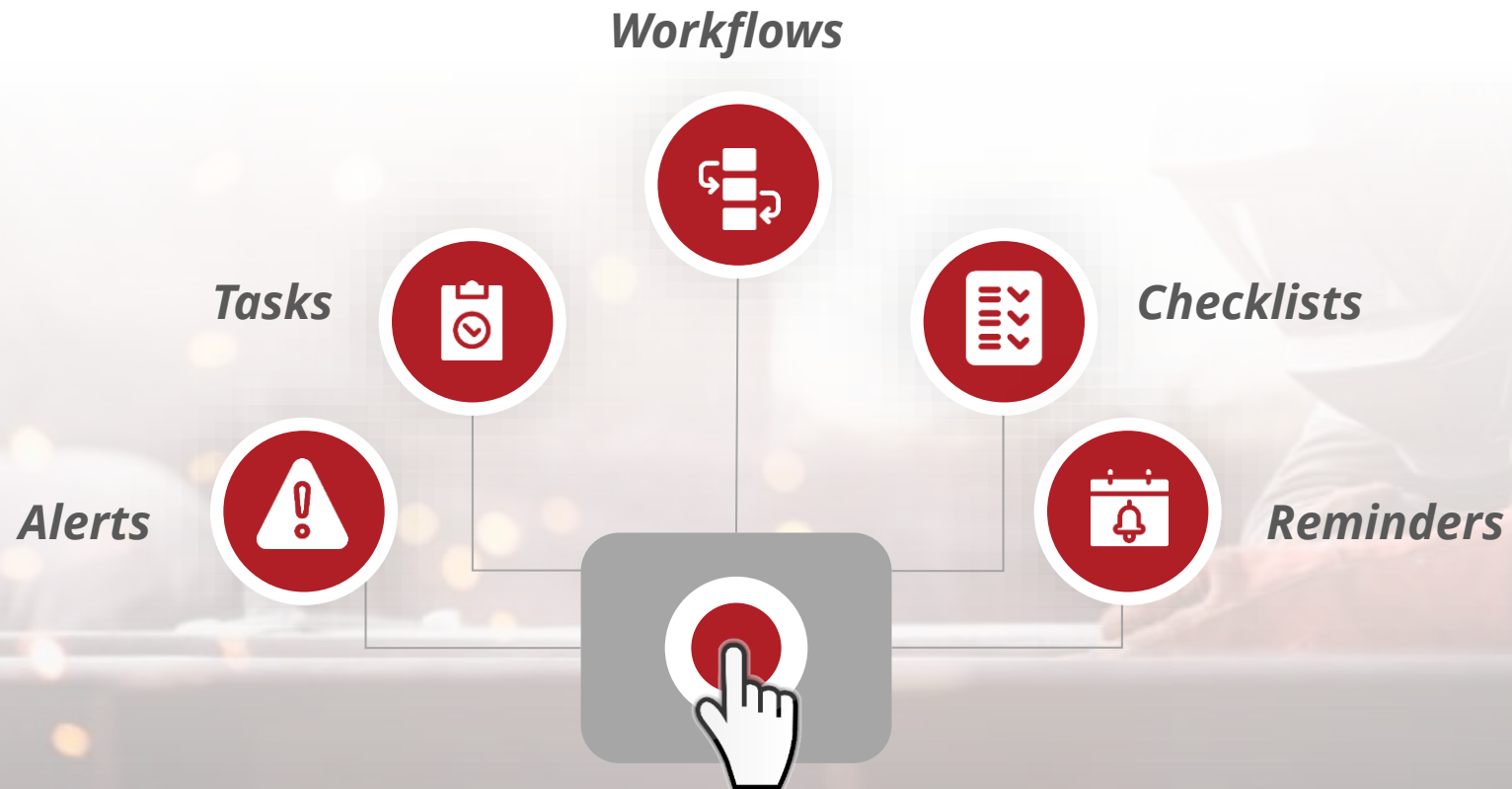


Electropolishing



Procedural & Progressive System

We use Workflow Management Software customized for our operations

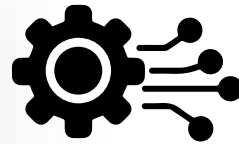


Project Management Process



Purchase Order

- Check Commercial Terms
- Check Technical Data
- Check Client Credit Limit
- Assign Project Engineer



Pre-Engineering

- [Preparing Documents](#)
- Fabrication Planning
- [Packaging and Layout Study](#)



Fabrication

- Subcontractor Agreements
- Fabrication Schedules
- [Follow-up Charts](#)
- [Progress Reports](#)



Packing & Shipment

- [Labelling](#)
- Packing Lists

QC Process



Quality Plan

- ITP
- NDT requirements
- Prior notes & NCR's
- Analysis of intended use
- Template design (if required)
- Hold points
- Control frequency



Quality Control Forms

- Numbering critical dimensions
- Remarks
- Cautions
- Tolerances
- Measurement tools

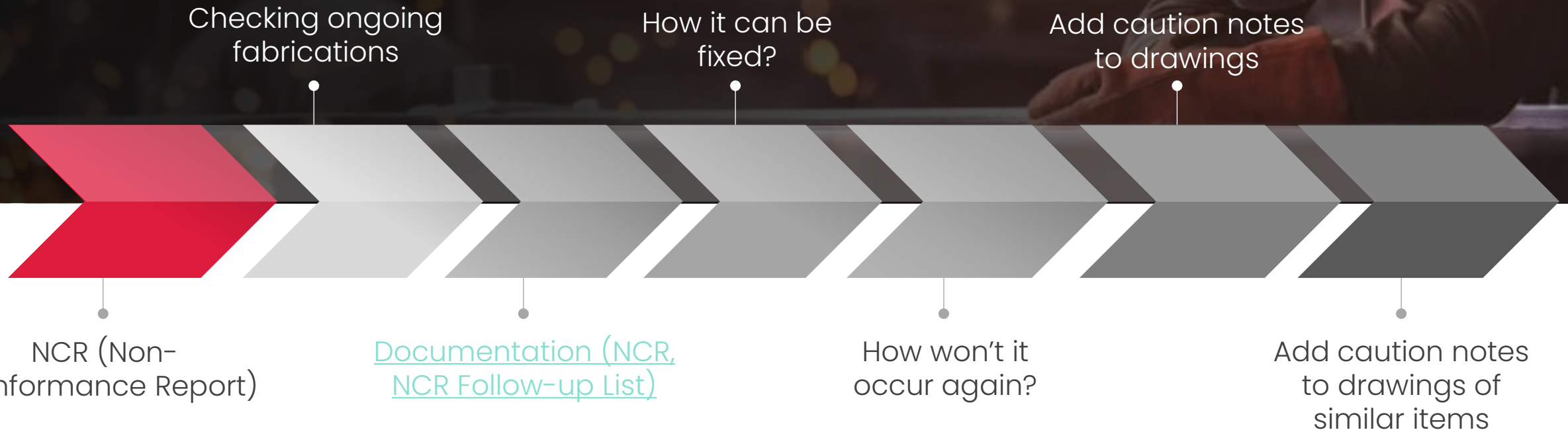


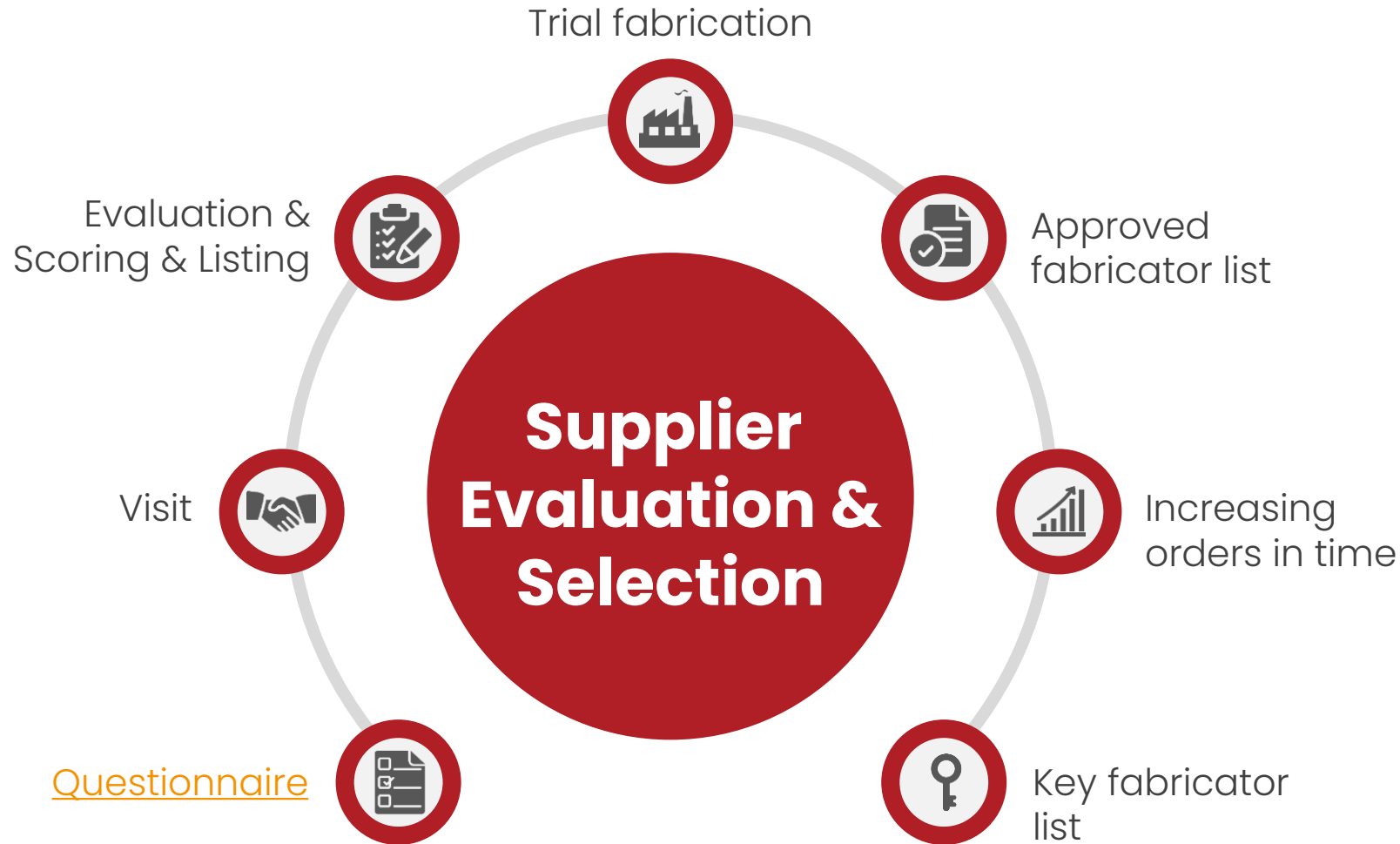
Assignment & Training QC Officer



Briefing to Fabricators

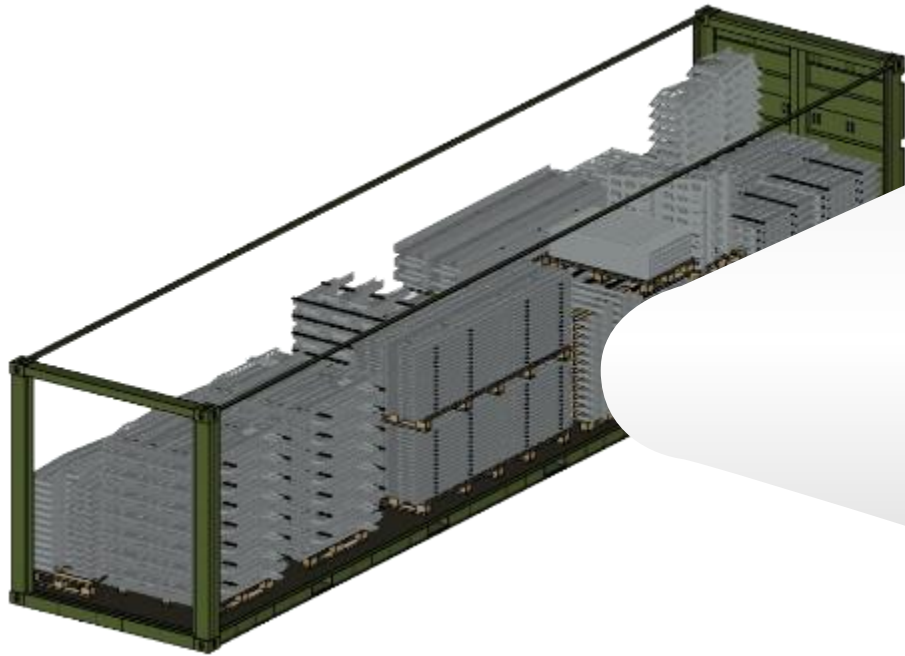
NCR Process



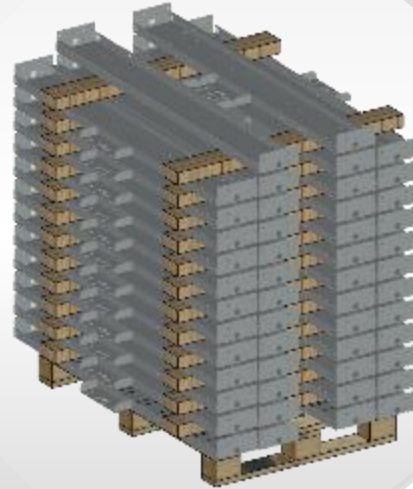


- Quality
- Capacity
- Capability
- Delivery time
- Machinery
- Price
- Location
- Financial stability
- Long-term potential

Packaging



3d container layout



3d package design



Realization

Packaging



Packaging



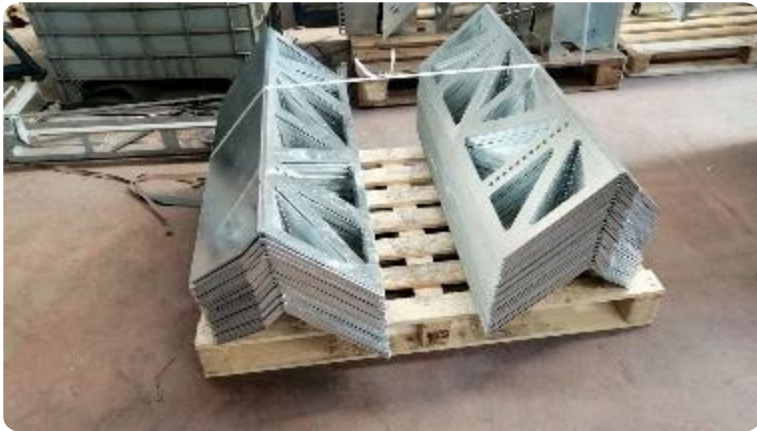
Packaging



References



References



References



References



References



References



References






You can scan the QR Code to add our contact details to your mobile



Merci • Thank You
Teşekkürler •
Danke • Grazie

You're warmly welcome to visit our office anytime.
Free Beverage & Snacks!

CONTACT INFORMATION

 Esentepe Mh. Milangaz Cd.
Monumento Plaza No:75/18
Kartal 34870 Istanbul / Turkey

 +90 216 510 2515

 +90 216 510 2534

 info@adamfab.com